

224 Series

Lighting Connectors



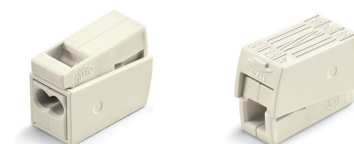
224 Series

Technical Data

○ Installation side	1 - 2.5mm ²	solid
■ Lighting side	0.5 - 2.5mm ²	solid & fine-stranded
400 V/4 kV/2 [Ⓞ]		
24 A		
9 - 11 mm		

Description.	Item No.	Box Unit.
--------------	----------	-----------

○ 2-conductor	224-101	100
○ 3-conductor	224-112	100
○ 2-conductor	224-201 [Ⓞ]	50

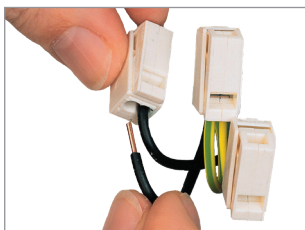


○ Installation side

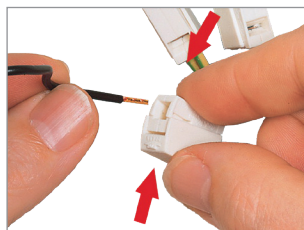
■ Lighting side

[Ⓞ] Both sides of the 224-201 connector allows for 0.5 - 2.5mm² solid & fine-stranded.

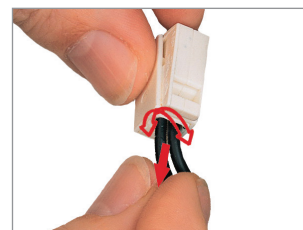
Operating



1. Strip both conductors 9 - 11mm. 2. Insert the solid conductor fully into the installation side to complete the connection.



3. To connect the lighting side squeeze together the housing and insert the conductor fully, then release to complete the connection.



4. To remove the installation side simply twist and pull the conductor at the same time. To remove the lighting side squeeze together the housing and pull out the conductor.

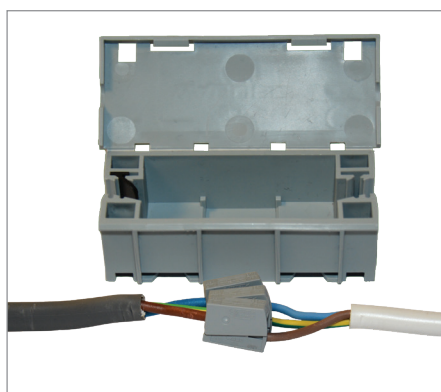
Advantages & Accessories



Test slot

Back of the housing

- Easy testing while installed



WAGOBOX Light

Junction box

- Suitable for the 224 Series